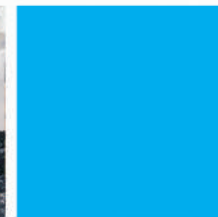




JINYIBO INSTRUMENT
Precise Instruments, Perfect Experience

CS8800S

Carbon/Sulfur Analyzer



Carbon and Sulfur Determination by Combustion
Innovation with Integrity
Ore Analysis



CS8800S

Carbon/Sulfur Analyzer

CS 8800S Carbon & Sulfur Analyzer meets the needs of customers with superior performance, and combustion technology eliminates the impact on the sample matrix for accurate and fast analysis. The carbon and sulfur content needs to be monitored throughout the normal production process to quickly and accurately analyze the carbon and sulfur content in all kinds of ore, ceramics, limestone and cement.

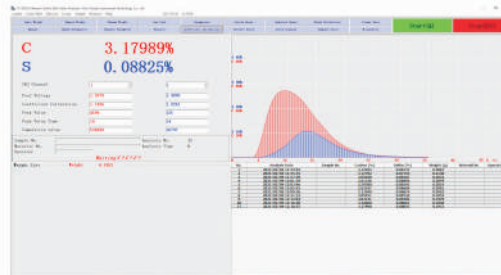
1 Advanced Operation Software

Advanced User-Friendly Interface

The user-friendly-designed software for the CS series makes the best of an intuitive menu design that displays only those items required for each operation.

For example, in the measurement window, only the related menus for the measurement are shown.

The new software platform enables everyone to operate the CS series without long hours of software training.



Automatic Diagnosis System

When any fault occurs, we can use several hot keys to find where is wrong. As we say automatic leak detection, diagnosis function.

Thus, CS8820S saves the user unnecessary downtime and running cost.

Gas Path Test (ESC Lock)	
1. Total Air Valve	On/Off
2. Oxygen Blowing Valve	On/Off
3. Oxygen Carrying Valve	On/Off
4. Cleaning Valve	On/Off
5. Entrance of Gas Chamber	On/Off
6. Exit of Gas Chamber	On/Off
7. Ash Discharge	On/Off
8. High Frequency Furnace	On/Off
Cylinder Signal	Y / N

Some Special Function

It has the functions of channel selection, data statistics, breakpoint correction, results corrected, the system of detecting, system diagnostics and more than forty functions.

There are 100 carbon and sulfur release curves (each 50), it is can be stored at any time, and can be complete with carbon release curve and sulfur release curve.

Linearization calibration technology in full range, there are single and multi-point calibration, it can be set up one, two, three and more Linear calibration equation, and it improves linear calibration equation and the correction of analysis data.

CS8800S Features

2 Long MTBM (Mean Time Between Maintenance)

The whole machine adopts modular design, highly integrated electronic circuits, it is very stable and reliable, meanwhile, it is adopted multi-level isolation so as to resolve high frequency interference thoroughly.

It is adopted 32-bit sampling chip which belongs to America Analog Devices Company so it has fast speed and high precision.

special aviation motor, its thermal stability well, it has a long service life.

Gold-plated carbon and sulfur analysis pool and High-precision pyroelectric infrared detector.

special new type platinum infrared light source, it is efficient and its spectral stability.

High-frequency furnace output is power and power adjustable, it is suitable for all kinds of sample combustion analysis, a wide range of test materials, the whole machine adopts Import solenoid valve, high-frequency Ceramic power tube etc.



3 High Throughput

Generally it takes about 35 seconds for a user to analysis a sample.

(Adjustable 20-60s)

This quick and efficient procedure reduces the cycle time and enables the user to enjoy a stress-free operation environment.



4 Fast and Easy Maintenance

The whole machine adopts modular design, highly integrated electronic circuits

it is adopted high quality linear integrated military-grade power module

it is adopted Self-excited directional coupler

Fully automatic cleaning system with noiseless and vacuum-free dust removal: no routine maintenance, vacuum free dust removal into the crucible



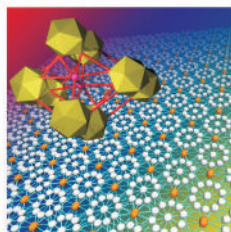
Application: CS8800S Carbon & Sulfur Analyzer is used in mineral such as metal minerals (such as iron, manganese, copper), non-metallic minerals (such as diamonds, limestone) and so on.

Application Examples



Mineral

Cokes,
Lime stone,
Coal,
Silicone
Rare metal



Others

Catalyst,
Rubber
Inorganic
Ceramic
Cement

Technical Specifications

Items	Index
Analysis theory	High-frequency furnace burn infrared absorptive detection.
Range of measurement	C: 0.00001%~99.99999% S: 0.00001%~99.99999%
Analytical error	Accord with ISO9556/ ISO4935/ JIG395-97
Analysis precision	C: \leq RSD0.5%. S:RSD \leq 1.0%
Sensibility (Min. reading)	0.01ppm
Detection point	C:C Pond (can add low C pond) S: S Pond (can add high S pond)
Time of analysis	20-60s can setting (usually 35s)
High-frequency furnace	Power \geq 2.5KVA — 7.5KVA oscillation frequency:20MHz
Electronic balance	Weight the sample in variable amount Accuracy of reading:0.0001g
Working environment	Indoor temperature: 10°C ~ 30°C Relative humidity: < 75% Voltage:AC220V \pm 5% Frequency50H \pm 2%

Accessories

Ceramic Crucible

Low carbon blank and high dimension tolerance for high precision analysis.



Accelerators

High-purity materials which support stable analysis:
Tungsten (W), Tin (Sn),
Copper (Cu), Iron (Fe), etc.



Certificated Reference Materials(CRMs)

Others

Other accessories such as Combustion Tube, De-dusting Tube, Combustion Tube Brush Cleaner,Oscillator, Desiccant etc., are also available.



CS8800S Analysis Report

Date	Sample	C%	S%	W(g)	Operator
2018/12/15 13:28:22	Coal Mine	51.29300	0.55428	0.0123	Eng.Ye Mao
2018/12/15 13:30:46		51.27322	0.61062	0.0119	Eng.Ye Mao
2018/12/15 13:36:43		51.61651	0.66846	0.0108	Eng.Ye Mao
2019/08/18 09:56:47	Graphite Carbon	64.83662	0.82001	0.0207	Eng.Ye Mao
2019/08/18 10:07:52		64.02216	0.82778	0.0202	Eng.Ye Mao
2019/08/18 10:09:49		64.00378	0.80366	0.0203	Eng.Ye Mao
2019/08/18 10:12:17		64.57870	0.82963	0.0214	Eng.Ye Mao
2019/08/18 10:15:40		64.90018	0.85483	0.0208	Eng.Ye Mao
2019/12/06 16:24:51	Graphite fiber	99.84472	0.05528	0.0218	Eng.Ye Mao
2019/12/06 16:29:58		99.85841	0.04158	0.0162	Eng.Ye Mao
2019/12/06 16:31:56		99.83047	0.06953	0.0110	Eng.Ye Mao
2019/05/20 10:18:50	Sulfur Concentrate	1.26802	67.71287	0.0218	Eng.Ye Mao
2019/05/20 10:24:11		1.24047	67.42908	0.0272	Eng.Ye Mao
2019/05/20 10:29:20		1.12267	67.28963	0.0226	Eng.Ye Mao





Sales & Service Offices Overseas:

Canada, U.S.A, Mexico, Brazil, England, Turkey, Belarus, South Africa, Zambia, Zimbabwe, Namibia, Ghana, Mali, Rwanda, Uganda, Ethiopia, Kenya, Tanzania, Sudan, Morocco, Egypt, Saudi Arabia, Iran, Pakistan, India, Thailand, Vietnam, Malaysia, South Korea, Indonesia

Sales & Service Offices in China:

Dongguan, Ningbo, Hefei, Chengdu, Changsha, Wuhan, Zhenzhou, Xi'an, Jinan, Shijiazhuang, Baotou.

WUXI JINYIBO INSTRUMENT TECHNOLOGY CO.,LTD. WUXI JINYIBO DETECTION TECHNOLOGY CO.,LTD.

📍 Add.: No.35 Jingsheng Rd.,Huishan District,
Wuxi City 214151, Jiangsu Province, China

☎ Tel.: +86-510-8322 3658 +86-510-8321 7963

📱 Cell.: +86-183 5283 6805

📠 Fax.: +86-510-8322 3758

🌐 Web.: www.jinyibo.com

✉ E-mail: sales@jinyibo.com



Products to prevail in kind, the picture is for reference only, Copyright. ownership belongs to Jinyibo company, shall not be reproduced, copied, or used in other ways without permission.